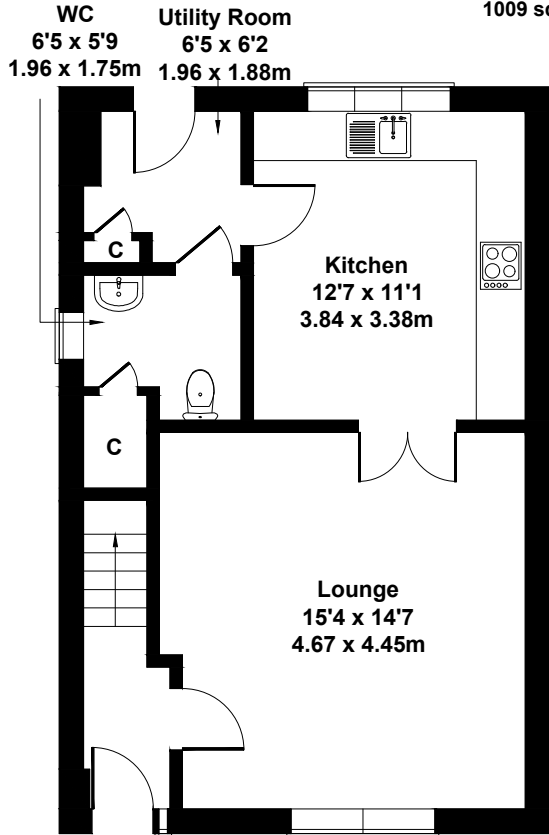


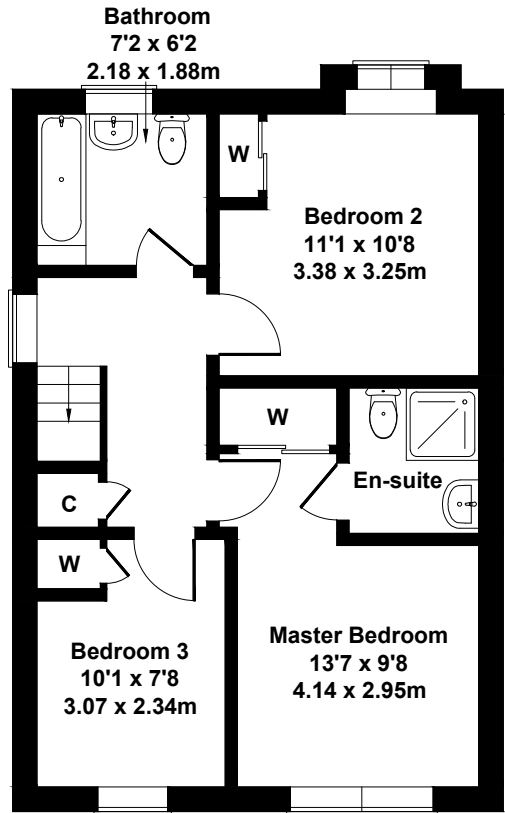
24 Roseknowe Way, Toryglen, Glasgow G42 0AF

Approximate Gross Internal Area

1009 sq ft - 94 sq m



GROUND FLOOR



FIRST FLOOR

SKETCH PLAN FOR ILLUSTRATIVE PURPOSES ONLY

All measurements walls, doors, windows, fittings and appliances, their sizes and locations, are approximate only. They cannot be regarded as being a representation by the seller, nor their agent.